

Spare part list

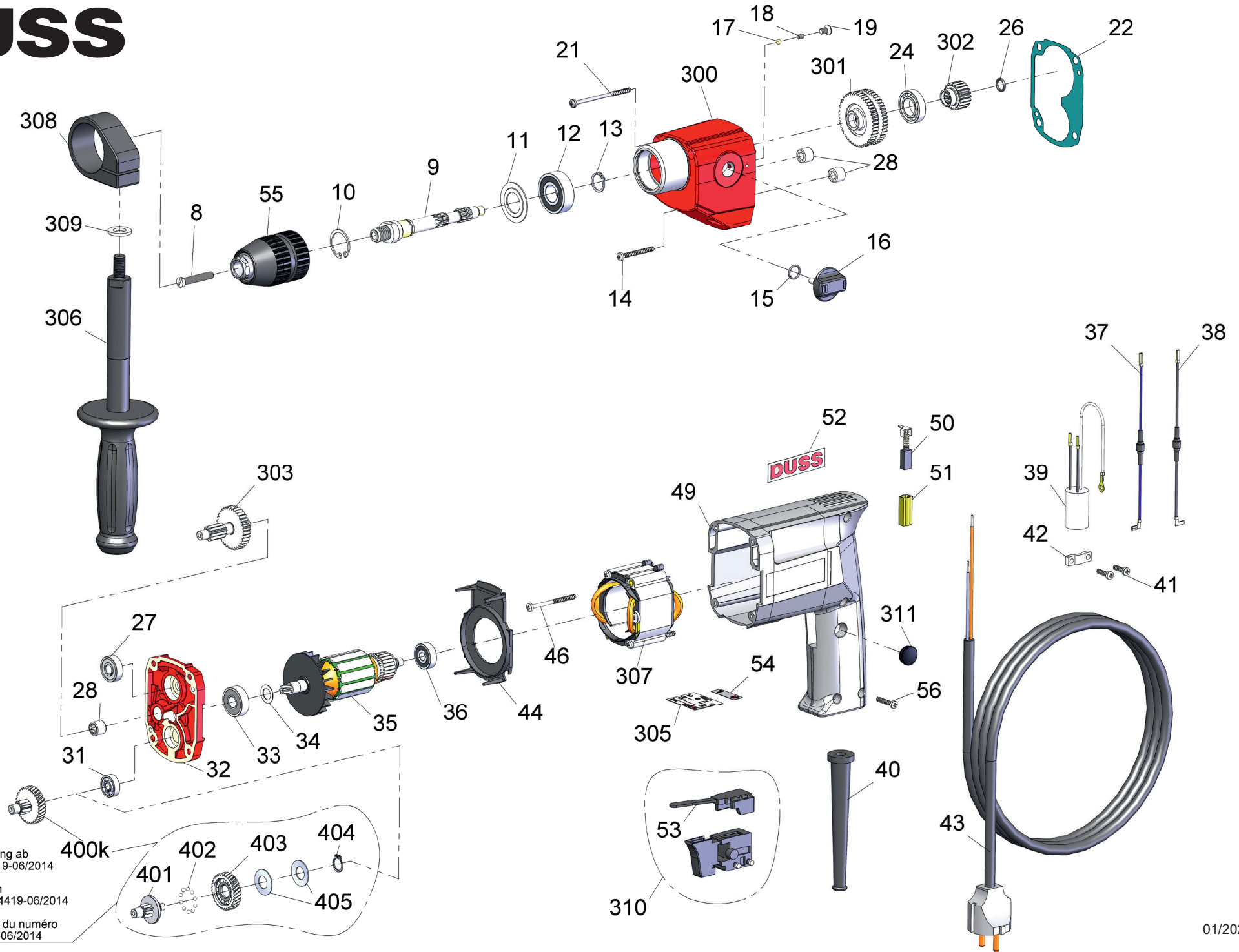
B 13 B drill driver

DUSS

Description	Order-No.	Quantity	Description	Order-No.	Quantity
Retaining screw M6	B13B-8	1	Switch	B13B-310	1
Tool bit driver	B13B-9	1	Plug	B13B-311	1
Retaining ring	B13B-10	1	Safety clutch	B13B-400k	0
Washer	B13B-11	1	Coupling shaft	B13B-401	1
Ball bearing	B13B-12	1	Ball dia. 3mm	B13B-402	10
Retaining ring	B13B-13	1	Clutch gear	B13B-403	1
Lens head screw 4x35	B13B-14	2	Retaining ring	B13B-404	1
O-ring seal 10x1,5	B13B-15	1	Disk spring 22,5x11, 2x0,8	B13B-405	2
Gearshift lever	B13B-16	1			
Ball dia. 4mm	B13B-17	1			
Spring	B13B-18	1			
Countersunk head screw M5x8	B13B-19	1			
Lens head screw 4x62	B13B-21	2			
Gasket	B13B-22	1			
Ball bearing	B13B-24	1			
O-ring seal 8x2	B13B-26	1			
Ball bearing	B13B-27	1			
Needle bearing	B13B-28	3			
Ball bearing	B13B-31	1			
Gear cover	B13B-32	1			
Ball bearing	B13B-33	1			
Washer	B13B-34	1			
Armature, 230V	B13B-35	1			
Ball bearing	B13B-36	1			
RFJ choke, blue	B13B-37	1			
RFJ choke, black	B13B-38	1			
Capacitor	B13B-39	1			
Cord sleeve	B13B-40	1			
Lens head screw 4x14	B13B-41	2			
Cord clamp	B13B-42	1			
Cord and plug	B13B-43	1			
Baffle plate	B13B-44	1			
Lens head screw 4x48	B13B-46	4			
Motor housing	B13B-49	1			
Carbon brush	B13B-50	2			
Brush holder	B13B-51	2			
DUSS sticker	B13B-52	2			
Reverser	B13B-53	0			
Sticker R-L	B13B-54	1			
Quick drill chuck 1/-20	B13B-55	1			
Lens head screw 4x20	B13B-56	4			
Front cover	B13B-300	1			
Sliding gear wheel	B13B-301	1			
Sliding pinion	B13B-302	1			
Second shaft	B13B-303	1			
B13B nameplate	B13B-305	1			
Side handle	B13B-306	1			
Field, 230V	B13B-307	1			
Clamping collar	B13B-308	1			
Washer M10	B13B-309	1			

DUSS

B 13 B



geänderte Ausführung ab
Maschinen Nr. 24419-06/2014

modification as from
machine number: 24419-06/2014

modification à partir du numéro
de machine: 24419-06/2014